



PINNACLE EQUIPMENTS PVT. LTD.

..... Since 1996

.....in business with

WATER TREATMENT PLANT
CHEMICAL & PETROCHEMICAL INDUSTRIES
PHARMACEUTICAL INDUSTRIES
OIL & GAS
ENGINEERING INDUSTRIES



INDEX

1	About Us
2	Product Range and Services
3	Area for Manufacturing, Storage of Raw Material & Consumable
4	Manufacturing Capacity & Special Facilities
5	Manufacturing Facilities
6	Export Documentation
6	Codes and Standards
7	ISO Certificate
8	Recently executed orders
9	List of our Customer
10	Details for various Inspection agencies visit to our shop
11	Organization Chart
12	General Information & contacts
13	Photo Bucket

...about us

PINNACLE EQUIPMENTS PVT. LTD. is a Multi-Product company managed by a group of Technocrat established in 1996. Since then, the company has been in the service to various Chemical, Pharmaceutical, Bulk Drug Manufacturing, Engineering & Mining Industries.

We undertake complete Process Design with particular emphasis on Heat Transfer, Distillation, Skid Mounted Piping, Reactors, Pressure Vessels, Storage Tanks, Agitator, Customized Fabrication and Weld overlay.

We also undertake design & erection of Piping System in various materials like Stainless steel, Carbon Steel, Duplex & Super Duplex Piping.

We specialize in shop fabricated items with particular emphasis on high-pressure piping, Pressure Vessels & Heat Exchangers and welding of Titanium, Hestalloy.

To give you brief overview of our company, we have enclosed an organizational profile outlining among various things, the company's technical capabilities and manufacturing range.

We have a dedicated team of Engineers & Technicians to undertake work at site of structural fabrication & piping. Our teams of technicians, Welders & Fabrication Fitters are very conversant with materials like, Alloy Steel, Duplex, Super Duplex, Stainless Steel, Copper, Cupro Nickel, Hastalloy C & Titanium

We have long standing experience in heavy mild steel & stainless steel fabrication and have executed jobs under inspection of:

- **ENGINEERS INDIA LTD.,**
- **NUCLEAR POWER CORPORATION OF INDIA**
- **CEIL (CERTIFIED ENGINEERS INTERNATIONAL LTD.),**
- **T.C.E., (TATA CONSULTING ENGINEERS LIMITED)**
- **K.P.G. (KVAERNER POWERGAS) ,**
- **DNV (Det Norske Veritas).**
- **BAX COUNCIL**
- **TUV India Pvt. Ltd. (Technical Inspection Services)**
- **BVIL**

PINNACLE EQUIPMENTS PVT. LTD. has the expertise, experience & the resources to meet these new challenges with their "state-of-art design, Engineering & manufacturing facilities at Pune apart from strong satisfied Vendors base.

We design & manufacture process equipments to meet the process requirement in accordance with relevant international standards including ASME, TEMA, BS, etc.

Product Range and Services

▣ **Heat Transfer Equipment:**

- We design & manufacture Heat Exchanger of various types like Shell & Tube type, Single & Multi-Pass design & Tailor-made Equipment offered for any fluid. Oil Pre-heater used in Carbon Black Industries are regularly manufactured by us. Some of our regularly manufactured Heat Transfer Equipments are Condensers, Re-boilers & Vaporizers, Double Pipe Heat Exchangers, Jacketed Vessels, Vessels with Internal Coils for Cooling or Heating, 'U' tube & Spiral Exchangers.

▣ **Reactors & Agitated Vessel:**

- Batch Reactors with jacket, Limpet Coil, Internal Coil with or without Agitator & Mechanical Seal.
- Agitator is designed for various applications like Emulsifying, Solid Suspension, Chemical Reaction, Heat Dissipation, Gas Dispersion, Pharmaceutical Formulation, etc.

▣ **Pressure Vessels**

▣ **Storage Tanks**

▣ **Process Columns for Distillation, Gas Transfer & Heat Transfer.**

▣ **Pre –Fabricated & Skid Mounted Pressure Piping of Carbon Steel , Stainless Steel , Duplex & Super Duplex.**

▣ **Fabrication of Titanium & Hestalloy Component**

▣ **Weld overlay of Stellite & Inconel**

▣ **Customized Fabrication**

Contd

▣ **Equipment for Carbon Black Industry:**

- We regularly manufacture and supply the following equipment and its spares for various **Carbon Black Industries:**

List of Equipment		
DENSE TANK WITH SCRAPER	PIN MIXER & POLISHER W/T MODIFICATION	VENTURI SCRUBBER
OIL PRE HEATER	DENSE TANK W/T MODIFICATION	BINDER CHARGE TANK WITH AGITATOR
PIN MIXER & POLISHER	MOISTURE SEPARATOR	KNO3 MIXING TANK WITH AGITATOR
AIR RECEIVER	SCRUBBER OVERHEAD TANK	QUENCH TOWER
ACCUMULATOR TANK WITH SCRAPER	SIPHON	SPILLAGE RECOVERY TANK
SMOKE INLET PLENUM	HEAT EXCHANGERS	AIR DISTRIBUTOR FOR REACTOR
BURNER NOZZELS		

Area for Manufacturing, Storage of Raw Material & Consumable

▣ Covered Area

Shed of 9000 Sq Ft X 12 meters Height complete with concrete flooring.

▣ Open Space

20000 Sq Ft

▣ CONSUMABLE STORAGE

500 Sq Ft of store room with storing selves with permanent identification tags. Computerized inventory control & planning.

Separate identified storage space for different filler wire with sizes and classifications like S.S 310, 304, 304L, 316, 316L, ER-2209 & ER-2594 (Duplex & Super Duplex).

Identified storage area for Empty and Full industrial gases like Ultra pure Argon, Nitrogen, CO2 and O2.

▣ RAW MATERIALS STORAGE

Rack No I

Partitioned pipe rack for storing different category of S.S pipes with color coding.

Separate identified area for Pipe fittings and flanges.

Rack No II

Separate storage arrangements for Carbon steel Pipe and Fittings.

Stainless Steel Plate Storage

Vertically stacked on wooden blanks with identification tag.

Tools Crib

Separate rack with identification in the same consumable stores.

Manufacturing Capacity & Special Facilities

Material Grade	Largest Diameter x Possible Length	Max Thickness	Tonnage
Carbon Steel (SA 516 Gr.60/70)			
Shell	Ø 3.50 Meter X up to 12 Meter Long	30 mm Thk	30 M Ton
Dished End	Ø 3.50 Meter	30 mm Thk	2.5 M Ton
Tube Sheet	Ø 2.00 Meter	150 mm Thk	3.5 M Ton
Stainless Steel (SS304/SS316/Duplex/Super Duplex)			
Shell	Ø 3.50 Meter X up to 12 Meter Long	20 mm Thk	20 M Ton
Dished End	Ø 3.50 Meter	20 mm Thk	2 M Ton
Tube Sheet	Ø 2.00 Meter	150 mm Thk	3.5 M Ton

Material Grade	Largest Diameter	Max Thickness	Tonnage
Dishing			
Dished End (SS)	Ø 3.50 Meter	20 mm Thk	2 M Ton
Dished End (CS)	Ø 3.50 Meter	30 mm Thk	2.5 M Ton
Rolling			
SS	Width 2500	20 mm Thk	
CS	Width 2500	30 mm Thk	
Bending			
SS	Width 2000	10 mm Thk	
CS	Width 2000	12 mm Thk	
Drilling	Max Hole Dia 50 mm x 170 Deep		
Digital Tube Expansion with Torque Controller	Available up to 38.1 OD		

Manufacturing Facilities

FACILITY	NAME OF MACHINE	CAPACITY	QTY.	MAKE OF MACHINE
DRILLING	Radial Drill Machine	50mm	1 No.	MAS Make
	Pillar Drill Machine	25mm	1 No.	Gurunanak
	Portable Hand Drill Machine	15mm	2 Nos.	Bosch, Hitachi
	Magnetic Drill	35mm	1 No.	Rallie Wolf
WELDING	Welding Rectifier (Inverter Type)	300 Amps.	5 Nos.	Advance Power
	Welding Rectifier with H.F.	600 Amps.	5 Nos.	Source
	TIG Welding out fit with HF unit	300 Amps.	4 Sets	Memco.
	Welding Transformer Air Cooled	300 Amps.	2 Nos.	Citron Make
	Welding Transformer Air Cooled	400 Amps.	2 Nos.	Advani Oerlikon
	Electrode Baking Oven	350 °C	2 Nos.	Ltd
	Electronically Control Mother Oven	350 °C	1 Nos.	Advani Oerlikon
	Welding Rectifier with HF unit	150 tons	2 Nos.	Ltd
	Hydraulic Press		1 Nos.	Haridas Custom Built IOL
CUTTING	Plasma Cutting (For Stainless Steel)	35 mm Thk	1 No.	Techno Craft
	Hand Cutting		4 Nos.	ESSAP, IOL
	Motorized Gas Cutting Set		4 Nos	Cobra

Continued ...

FACILITY	NAME OF MACHINE	CAPACITY	QTY.	MAKE OF MACHINE
CLEANING & PAINTING	Pneumatically Operated Painting System Compressor Compressor Spray Guns	5 Hp. 3 Hp. 5 Ltrs	2 No. 1 No. 1 No. 5 Nos	Kirloskar Make Aromatic Equip. Co.
MATERIAL HANDLING	Overhead Crane Chain Pulley Block Chain Pulley Block Pulling Tackles Mobile Crane (On Hire basis) Mobile Crane (On Hire basis)	10 Ton 5 Ton 2 Ton 2 Ton 12 Ton 14 Ton	1 No. 1 No. 1 No. 1 No. 5 Nos. 5 Nos.	Indef Escort / JCB Escort / JCB
PLATE BENDING & ROLLING	Plate Bending Machine 2000 width Double pre-pinch type 30mm thk. X 2500 mm heavy duty plate bending machine	Up to 4 mm Thk 30 mm in Thk	1 No. 1 No.	
PIPE BENDING	Hydraulic Operated Pipe bending	Up to 50 NB x sch 80 Pipe	1 No.	Custom Built

Continued

FACILITY	NAME OF MACHINE	CAPACITY	QTY.	MAKE OF MACHINE
DISHING	Hydraulic Operated Point Press	Max Dia 3.5 Mtrs x 30 Thk	1 Nos.	Custom Built
TUBE EXPANDING & GROOVING	Digital Tube Expander With Torque Controller Double Grooving Tool for Internal Grooving	up to 38.1 OD Tube sizes	1 Set	Power Master
MEASURING INSTRUMENT	Vernier Calipers Vernier Calipers Micro meter Steel Tape Steel Tape Measuring Tape Measuring Tape	0-200 mm 0-600 mm 0-25 mm 0-3 Mtrs 0-5 Mtrs 0-15 Mtrs 0-30 Mtrs	3 Nos. 3 Nos. 2 Nos. 5 Nos. 5 Nos. 2 Nos. 2 Nos.	Mitutoyo Mitutoyo Mitutoyo Freemans Freemans Freemans Freemans
HYDROSTATIC PRESSURE TESTING	Motorized Hydraulic Testing Pump Hand Pump	Up to 100 kg Up to 25 kg	1 Nos. 3 Nos.	C Bole Valton India

Contd

FACILITY	NAME OF MACHINE	CAPACITY	QTY.	MAKE OF MACHINE
NON DESTRUCTIVE	Radiography: Complete facility Densitometer, optical micrometer (L.C.0.1mm) Penetrameter DIN/ATSM All these facilities are available locally. Ultrasonic Testing: Digital Ultrasonic thickness measuring gauge, ultrasonic flaw detector with probe. Helium Leak Test:			Out Sourced at NABL approved Testing Facilities
HEAT TREATMENT	Approved by "Director Of Steam Boilers, Mumbai Complete Facility with Electric Surface Heating & Controls, Oil/Gas Fired Furnaces, Heat Treatment Equipments, Onsite Pre& Post Weld Heat Treatment, High Velocity Ladle dryers & Pre-Heaters is available.	Bogie Hearth Furnace Size 12.5 Mtr x 7.5 Mtr x 4.5 Mtrs	1 No.	Out Sourced
BLASTING & PAINTING	Closed Blasting & Painting Booth is equipped with Fully atomized Spray Gun System	10 Mtr x 20 Mtr x 12 mtrs	1 No	Out Sourced

Codes, Standards and Reference Books

SR NO	NAME OF BOOKS	ID NO
01	CHEMICAL ENGG HAND BOOK	PEPL - 01
02	PROJECT FINANCING	PEPL - 02
03	HEAT EXCHANGER DESIGN HAND BOOK	PEPL – 03
04	PROCESS PIPING ASME B-31.3	PEPL – 04
05	TEMA STANDARDS	PEPL – 05
06	CODE FOR UNFIRED PRESSURE VESSELS	PEPL – 06
07	AGITATOR DESIGN - 1	PEPL - 07
08	AGITATOR DESIGN - 2	PEPL - 08
09	NORSK STANDARD – EN10204	PEPL - 09
10	METHODS OF FABRICATION OF PRESSURE VESSELS	PEPL - 10
11	PLASTIC PIPING SYSTEMS ISO/DIN	PEPL - 11
12	NORSK STANDARD – EN-764-5	
13	SCREW CONVEYORS & SCREW FEEDERS	PEPL - 13
14	MACHINE TOOL DESIGN	PEPL - 14
15	MACHINE DRAWING	PEPL - 15
16	CHEMICAL ENGINEERING	PEPL - 16
17	BEARING CATALOG - 2007	PEPL - 17
18	STEAM TABLE WITH MOLLIER DIAGRAM – SI UNITS	PEPL - 18
19	2001 ASME BOILER & PRESSURE VESSEL CODE	PEPL - 19
20	ASME Std Edition 2010	PEPL-20

ISO Certificate



DET NORSKE VERITAS MANAGEMENT SYSTEM CERTIFICATE

Certificate No. 2169-2007-AQ-IND-RvA Rev. 01

This is to certify that

PINNACLE EQUIPMENTS PVT. LTD.

at

Gat No. 103, Jyotibanagar, Talawade, Pune - 412 114, INDIA

has been found to conform to the Quality Management System Standard:

ISO 9001:2008

This certificate is valid concerning all activities related to:

**MANUFACTURE OF CHEMICAL PLANTS AND EQUIPMENTS,
MATERIAL HANDLING SYSTEM AND WELD OVERLAY OF
NICKEL AND COBALT BASE ALLOYS**

Initial Certification date:
27 March 2007

This Certificate is valid until:
27 March 2013

The audit has been performed under the supervision of:

Parag Chandratreya
Lead Auditor



Place and date:
Chennai, 03 April 2010

for the Accredited Unit:
DET NORSKE VERITAS CERTIFICATION B.V.,
THE NETHERLANDS

Bhupalam Ajit
Management Representative

Lack of fulfilment of conditions as set out in the Certification Agreement may render this Certificate invalid.

DET NORSKE VERITAS CERTIFICATION B.V. Zoelweg 1, 3991 LE Barensteede, The Netherlands, TEL: +31 10 2922 088 - www.dnv.com / www.dnv.nl

Recently executed orders

Sr.	NAME OF CLIENT	P.O. NO	PROJECT	EQUIPMENT	M.O.C.
1	VA TECH WABAG LTD	MBG-PO-4051/P121	DJB DWARKA	M.S. Fitting	IS 2062 Gr B
2	NEUMAN & ESSAR ENGINEERING INDIA PVT LTD	PO-2009-10-161	BPCL Cochin	Cooling water tank Inter connecting Piping Skid & complete assembly	S.S. 304
3	VA TECH WABAG LTD	MBG-PO-3116/P120-M	DJB CWGV - M	Header for Micro Filtration	S.S. 316
4	PHILIPS CARBON BLACK LIMITED	4700002600	MUNDRA	Dense Tank with Agitator	S.S. 316
5	PHILIPS CARBON BLACK LIMITED	4700002573	MUNDRA	Aglomerator Tank	S.S. 316
6	AQUATECH SYSTEMS ASIA PVT. LTD	AE-1017-101306/09	TCI SANMAR CHEMICAL LLC, EGYPT	Piping	S.S. 316
7	ADITYA BIRLA NUVO LIMITED	HTC/PG/PEPL/13209-10	PATALGANGA PROJECT	Fin Tube Heat Exchangers	C.S.
8	ADITYA BIRLA NUVO LIMITED	HTC/PG/PEPL/098-09-10	PATALGANGA PROJECT	Pressure Vessles	S.S. 316
9	ADITYA BIRLA NUVO LIMITED	HTC/PG/RIL/064/09-10	PATALGANGA PROJECT	Pressure Vessles & Storage Tank Air Receiver, Oil Preheater (Heat Exchangers)	S.S. 316
10	NEUMAN & ESSAR ENGINEERING INDIA PVT LTD	PO/2008-09/210	HEML Bhatinda	Cooling water tank Inter connecting Piping Skid & complete assembly Total Lube Oil Systems	S.S. 304 & C.S
11	PHILIPS CARBON BLACK LIMITED	4700001523	MUNDRA	Pressure Vessel, Storage Tank Oil Preheater (Heat Exchangers)	S.S. 316 , 304
12	PHILIPS CARBON BLACK LIMITED	4700001469	MUNDRA	Air Receiver	S.A. 516 GR 60
13	VA TECH WABAG LTD	P 116/014	DM PLANT FOR SUDAN POWER PROJECT	Pressure Vessels	S.A 516 GR 60
14	PHILIPS CARBON BLACK LIMITED	4700001330	MUNDRA	Dense Tank with Agitator	S.S. 316
15	VA TECH WABAG LIMITED	P-102/160	DM & CPU PLANT AT DHALIGAON ASSAM	S.S. Piping Spools	S.S. 304 & 316

Contd ...

Sr.	NAME OF CLIENT	P.O. NO	PROJECT	EQUIPMENT	M.O.C.
16	AQUATECH SYSTEMS ASIA PVT LTD (UNIQUE)	UCE/PO/08-09-39	Shell DTL, USA	S.S. Piping Spools	S.S. 316
17	AQUATECH SYSTEMS ASIA PVT. LTD	MESAIEED-4106	MESAIEED	S.S. Piping Spools	S.S. 316
18	AQUATECH SYSTEMS ASIA PVT. LTD	RIL-JERP-039-A	RELIANCE	S.S. Piping Spools	S.S. 316
19	AQUATECH SYSTEMS ASIA PVT. LTD	SHELL-3011 A	SHELL	S.S. Piping Spools	S.S. 316
20	GLOBAL CHEMICAL COMPANY LLC U.A.E.	0041/07	UNITED ARAB EMIRATES	S.S. Piping Spools	S.S. 316
21	AQUATECH SYSTEMS ASIA PVT. LTD	CP-ZLD-140 A	HERO	S.S. Piping Spools	S.S. 316
22	AQUATECH SYSTEMS ASIA PVT. LTD (PRESSURE VESSELS)	PVI/AQA/922-07-08	SHELL	S.S. Piping Spools	S.S. 316
23	SANMAR SPICILITY CHEMICAL LTD	2900003251		Reactor & Storage Tanks	S.S. 316
24	DAUSER WATER SOLUTION PVT LTD.	20070314	Sugen CCPP Gujrat	Storage Tank, Pressure Vessels	S.S.304
25	SILICON INTERNATIONAL PRODUCTS	217	Khopli	Reactor with agitator	S.S. 316
26	VA TECH WABAG LTD	PO 090/120	ETP IOCL GUWAHATI RENINERY	S.S. Ducting & Internals	S.S. 316
27	AQUATECH SYSTEMS ASIA PVT. LTD	MHI -28075	mitsubishi	S.S. Piping Spools	S.S. 316
28	AQUATECH SYSTEMS ASIA PVT. LTD	GS-2006-030 A		S.S. Piping Spools	S.S. 316
29	DAUSER WATER SOLUTION PVT LTD.	20060620	Sugen CCPP Gujrat	Duct	S.S. 304
30	AQUATECH SYSTEMS ASIA PVT. LTD	GS-2006-009 B		S.S. Piping Spools	S.S. 316

List of our Customers

GLOBAL CHEMICALS COMPANY LLC-U A E	PHILIPS CARBON BLACK LIMITED KOLKATA
SANMAR SPECIALITY CHEMICALS LTD-BANGALORE	PROCTER & GAMBLES LIMITED, MUMBAI
INDOGULF CORPORATION LIMITED DAHEJ (UNIT OF BIRLA COPPER)	INDUSTRIAL OXYGEN LIMITED
VIRGO ENGINEERS LIMITED, PUNE	RAMA INDUSTRIES LIMITED
VA TECH WA BAG LIMITED	PALBO DISTILLERIES PVT. LIMITED
ADITYA BIRLA NUVO LTD PATALGANGA	INDUSTRIAL OXYGEN LIMITED
AQUAPHARM CHEMICAL CO. PVT LIMITED PUNE	LITAKA PHARMACEUTICAL LIMITED
LUPIN LABORATORIES, BHOPAL	SKANSKA CEMENTATION INDIA LIMITED
SINAR MASS PAPER & PULP INDIA LIMITED.	KOPRAN LIMITED
ALFA LAVAL (INDIA) LIMITED, PUNE	HINDUSTAN AERONATICS LIMITED
KDL BIOTECH LIMITED, KHOPOLI	FINOLEX INDUSTRIES LIMITED PUNE/RATNAGIRI/URSE
SUDARSHAN CHEMICAL INDUSTRIES LIMITED, PUNE	AQUATECH SYSTEMS (ASIA) PVT. LTD., PUNE
HINDUSTAN LEVER LIMITED, PUNE	NEUMAN ESSAR INIDA PVT LTD. PUNE
VOLTAS LIMITED	EMCURE PHARMACEUTICALS

Our Clientage



SUDARSHAN



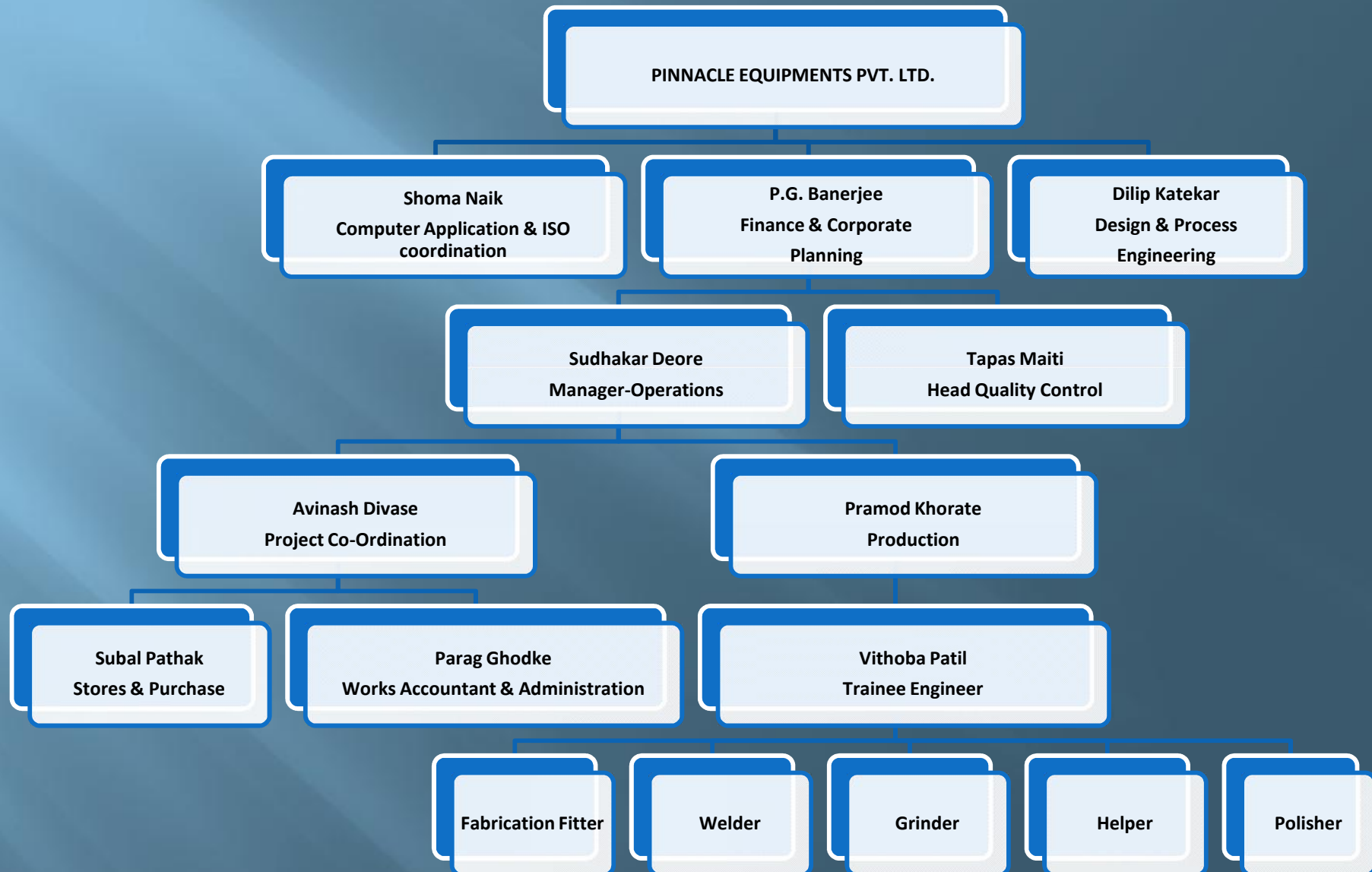
Emcure[®]



Regular TPI Inspection by



Organization Chart



General Information

□	Name of the company	:	PINNACLE EQUIPMENTS PVT. LTD.
□	Works & Administrative Office	:	Gat No.103, Opp. Jyotiba Mangal Garden, Jyotiba Nagar, Talawade Road Pune - 412 114 India
□			
□			
□	Contacts	:	Telefax: +91 (020) 27690413 Office: +91 (020) 27690890
□			
□	Mr. P G Banerjee	:	+91-94220 87380
□	Mr. Avinash Divase	:	+91-98229 64860
□	Mr. Sudhakar Deore	:	+91-95270 05650
□	E – Mail	:	marketing@pinnacleequipments.com pinnacleequip@gmail.com
□	Website	:	www.pinnacleequipments.com
□			
□	Bankers	:	Bank of Baroda (Sp. S.S.I. Branch.) with IB; State Bank of India, MIDC Chinchwad Branch
□	S.S.I. Registration No.	:	27 025 12 01155
□	C. S. T. TIN	:	27680702339 C
□	V.A.T. TIN	:	27680702339 V
□	Excise Reg. No	:	AAECP7707JXM001
□	IEC Code (Import & Export Code)	:	3105011811

Photo Basket



CARBON BLACK
INDUSTRY PRODUCTS

DENSE TANK & SCREW FEEDER

OIL PREHEATER

AGGLOMERATOR TANK



Photo Basket



AGITATORS



Photo Basket



OIL PREHEATER



Photo Basket



STORAG ETANKS & PRESSURE VESSELS



Photo Basket



HEAT EXCHANGERS & CONDENSORS

Photo Basket



PHARMA EQUIPMENT



Photo Basket



SKID MOUNTED PLANT



Photo Basket



PRE FABRICATED
PRESSURE PIPING



Photo Basket



WELD OVER LAY (INCONEL / STALITE / MONEL)



Give us an opportunity to serve you

Thank You